

MONTHLY MEMBERSHIP PROGRESS REPORT

District 36 G

Results as of: 6/30/2020

GMT:

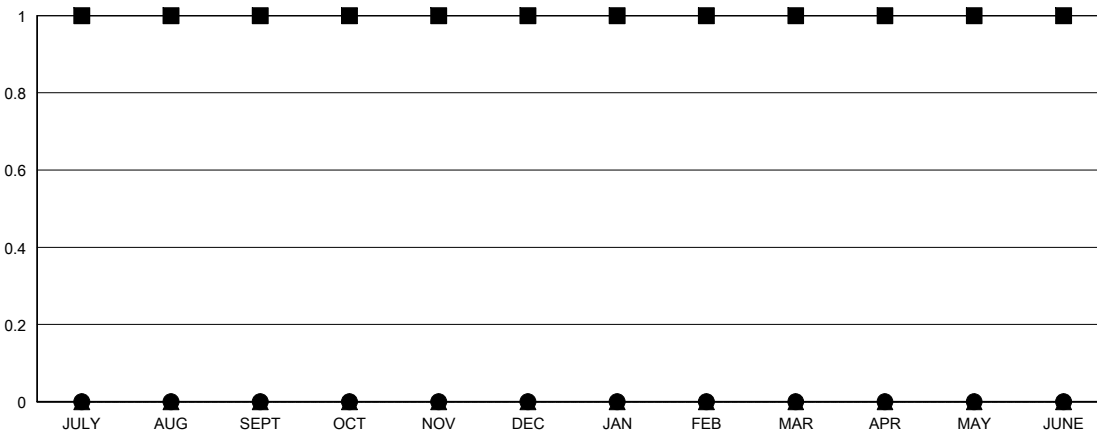
LOCATION OREGON

GMT CA

| Clubs | | | |
|-----------------------|---------------|-----------|---------------|
| RESULTS FOR 2019-2020 | | | |
| QUARTER | NEW CLUB GOAL | NEW CLUBS | DROPPED CLUBS |
| JULY/AUG/SEPT | 1 | 0 | 0 |
| OCT/NOV/DEC | 0 | 0 | 0 |
| JAN/FEB/MAR | 0 | 0 | 0 |
| APR/MAY/JUNE | 0 | 0 | 0 |

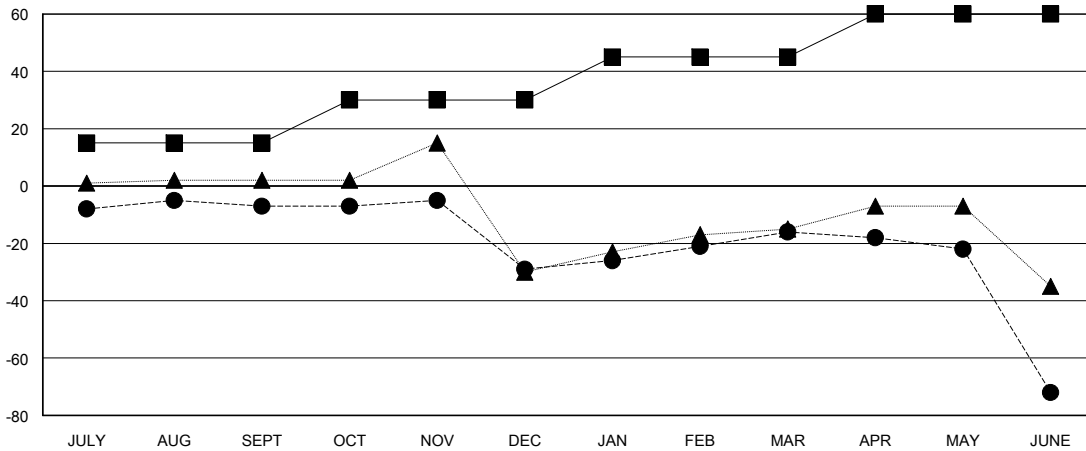
| Members | | | |
|-----------------------|------------------------|----------------------|----------------------------------------------|
| RESULTS FOR 2019-2020 | | | |
| QUARTER | MEMBER GROWTH NET GOAL | MEMBER GROWTH ACTUAL | DROPPED MEMBERS ACTUAL (including transfers) |
| JULY/AUG/SEPT | 15 | 45 | 34 |
| OCT/NOV/DEC | 15 | 23 | 43 |
| JAN/FEB/MAR | 15 | 38 | 19 |
| APR/MAY/JUNE | 15 | 5 | 59 |

GOALS AND ACTUAL NEW CLUBS CUMULATIVE



- - CURRENT YEAR GOALS FOR NEW CLUBS
- - CURRENT YEAR ACTUAL NEW CLUBS
- ▲ - LAST YEAR ACTUAL NEW CLUBS

GOALS AND ACTUAL MEMBERS CUMULATIVE



- - MEMBER GROWTH NET GOAL
- - MEMBER GROWTH ACTUAL
- ▲ - LAST YEAR MEMBERSHIP ACTUAL

| | | |
|-------------------------------------------------------------------------------------|-----------------------------------------------------------|------------------------------------------------------------------------|
| DROPPED CLUBS: 0 | 21 CLUBS OF 30 ADDED 1 OR MORE NEW MEMBERS | GENDER DISTRIBUTION MALE 495 (61.26%) FEMALE 313 (38.74%) |
| DROPPED MEMBERS DECEASED 13 CLUB CANCELLED 0 OTHER 142 TOTAL 155 | CLICK HERE FOR CUMULATIVE MEMBERSHIP DATA | TOTAL FAMILY UNIT MEMBERS 241 FAMILY MEMBERS PAYING HALF DUES 122 |